

WORKING WITH ARTWORK

Sue Green-Baker

MasterWorks uses Vector Images. Let's discuss the difference between the two major forms of artwork that computers use. BMP, PCX, GIF, JPEG, PIX, TGA are all graphic identifying extensions. These graphics are called Raster graphics. They are made using drawing methods that contain pixels. Colors on a raster graphic is applied to pixels that make up the area. Many times the edges of a Raster graphic are jagged because of the pixels it uses to make the graphic. Pixels make edges look like tiny box steps.

Vector, or WMF graphics are made using layers of color. Think of a red circle sitting on top of a blue square. The blue color of the square will be underneath the red color of the circle! The outer edges of a Vector graphic are smooth, not jagged.

Artwork can be clipart, drawings you have scanned or drawings you have traced using the "background" feature in **MasterWorks**. In this lesson, we will create an embroidery design using all three methods.

MasterWorks has four digitizing wizards. Wizards will do most of the work for you or at the least, prepare your drawing to be digitized by you making special selections.



The Cross Stitch Wizard will make a design with a cross stitch fill. The fill can be sized to fit the standard cross stitch settings. The cross stitch wizard can read all the major graphic formats, including vector images.



The Photo Stitch Wizard will make a design using a photo. This wizard uses only four colors to make the design. The photo stitch wizard will read all the major graphic formats, including vector images.



The Autodigitizer Wizard will make the design using clipart or color drawings or will let you start with a line drawing and apply the color to the drawing by using the editing feature within the wizard. The autodigitizer wizard will work with most of the major graphic file formats, including vector images.



The Auto Artwork Wizard will make a standard graphic file into vector artwork so MasterWorks can work with the art. You can also edit a line drawing and fill it with color using this wizard.

SETTING UP THE WORKSPACE

Place your cursor over the corner of the line rulers. **<Right click your mouse>** to open a grid menu.

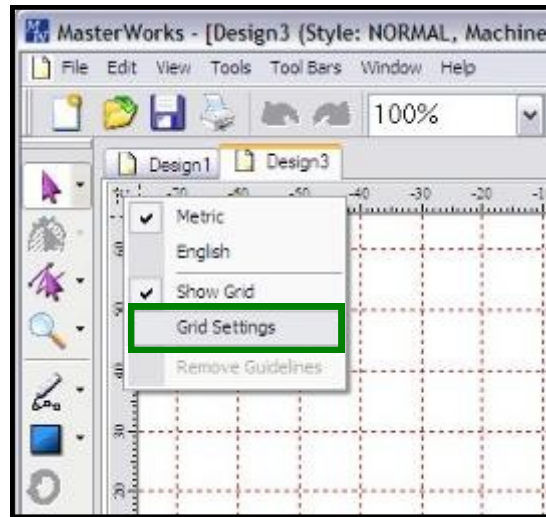
Select either **<Metric or English>** to set your ruler measurements.

Right click here



GRID SETTINGS

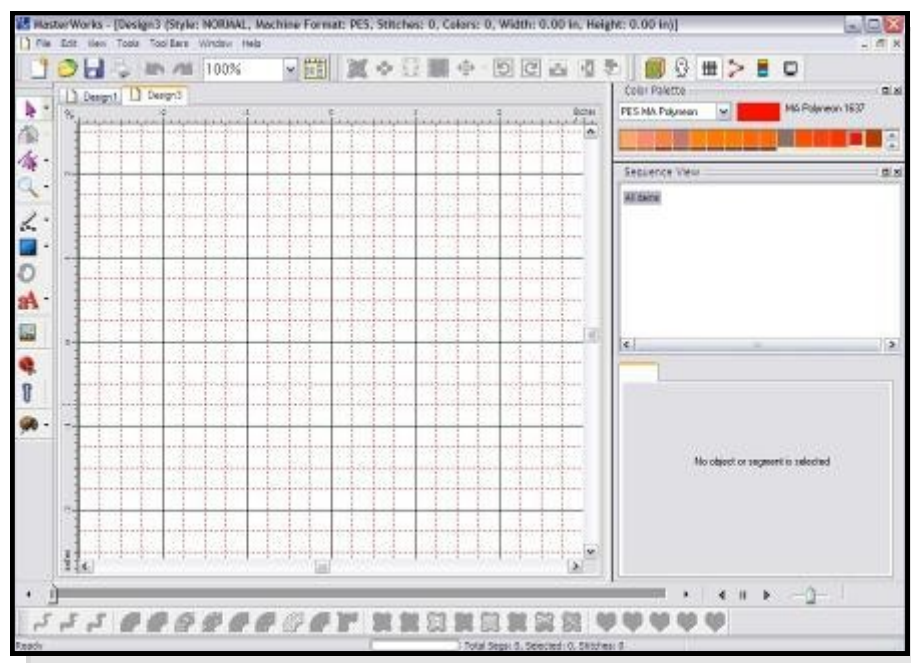
Let's set the grid to measurements we like. Place the cursor in the upper left corner of the ruler corner and click the <right mouse button>. This time, select <Grid Settings>.



Make the changes in the settings as shown in the picture at the right.

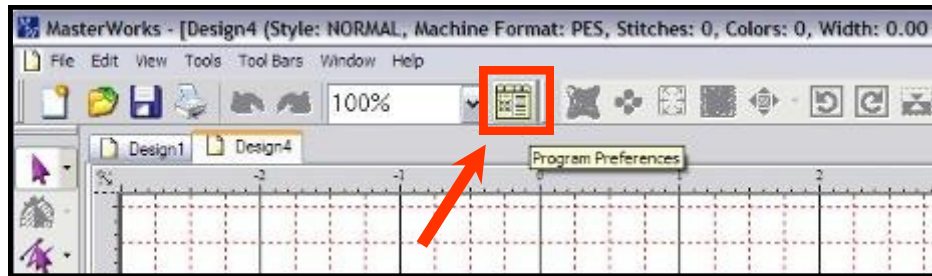


Your grid will now have black one inch lines and red dotted 1/4 inch lines.



SETTING THE GRAPHICS EDITING PROGRAM PREFERENCES

In the preferences set-up window, you can set MasterWorks to use the preferences you use the most while working with designs. You can tell the software what fabric you will be using, what your machine format is, what editing program you want to edit your designs in, how you want your grid set up, the size and stitch length of your basting files and how you want the color sort feature to work!



Left click on the <Program Preferences> icon on the menu bar. This will open the “Formats Tab” in the preferences setting dialog box below.

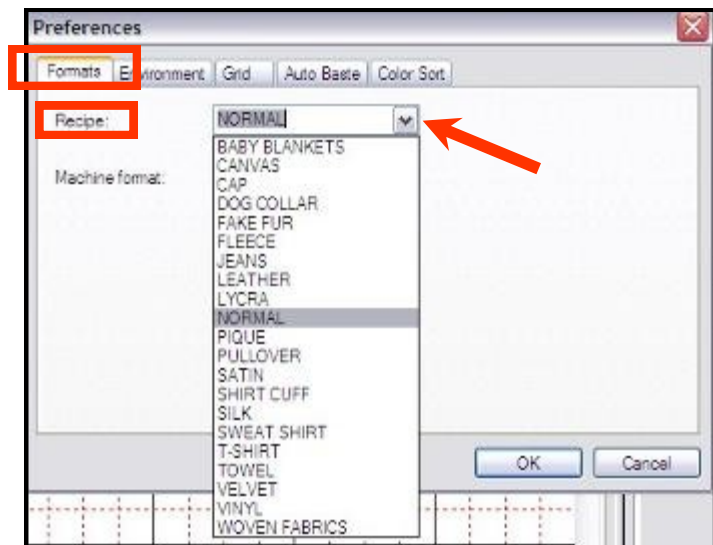
When the preference window opens, the “Formats” tab will be selected.

Selecting the recipe.

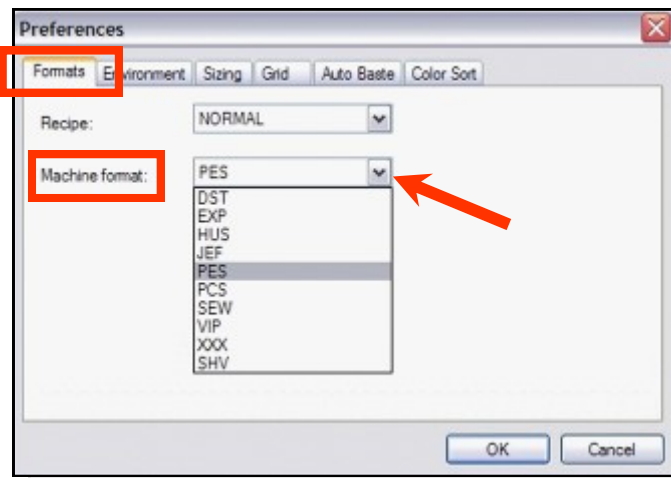
To select the “recipe”, left click on the <down arrow> in the recipe box. You have all these fabrics to choose from.

To save you time in figuring out exactly what type of undersewing, density settings, stitch length etc., MasterWorks will do it for you if you tell the software what type of fabric you will be embroidering on!!! A real time saver!

For now, we will leave it on *normal*. I suggest you always select your recipe before you begin digitizing.



Still in the “Formats” tab, you can select the embroidery extension your digitizing software uses.



Click on the <Environment> tab.

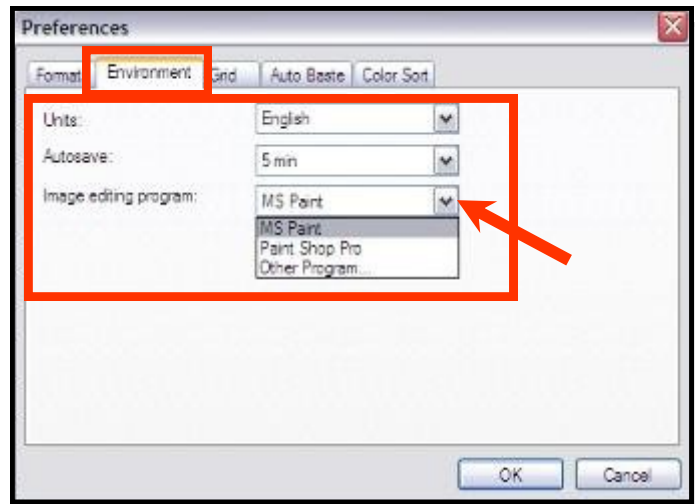
The settings on the workspace can be set to **English** or **Metric** in the <Units> window.

Click the <down arrow> at the end of the “Autosave:” window. Here you can set the time you want the software to automatically save your work. If something happens and your computer is shut down before you can save your work, the software will have save it for you automatically using the minute setting you indicate here.

If this happens, restart the program. Click on <File>, <Restore Autosaved> and the design will be placed on the workspace at the same place it was when your computer shut down!!

When using the MasterWorks Wizards, you can edit your artwork using a graphics editing software such as, MS Paint, Paint Shop Pro, or any graphics program of your choice.

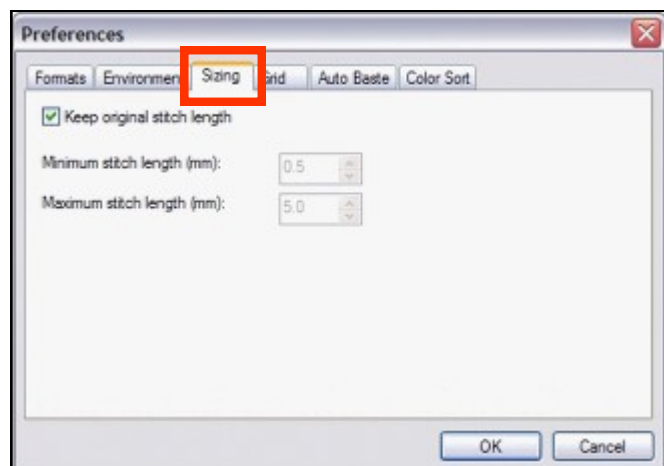
In the environment window, click on the <down arrow> at the end of the “Image editing program” box. Here is where you select the graphics editing program you want to use. For now, click on <MS Paint>.



Click on the <Sizing> tab.

This setting is for digitizers that want complete control of the basic settings for the minimum and maximum stitch length settings.

Most of the time the software default settings are good enough. I leave this setting at “Default”.

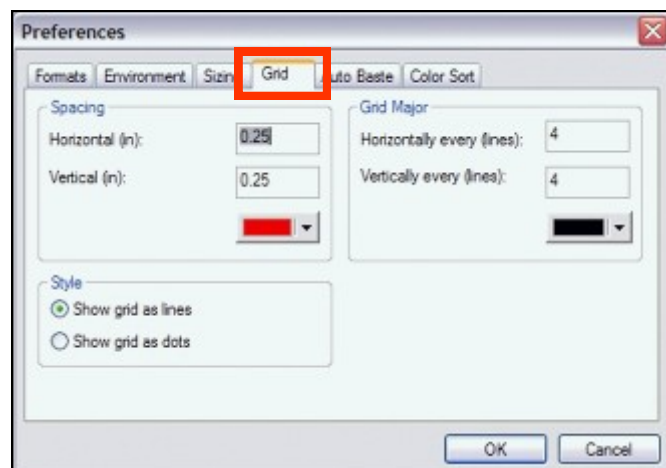


The Grid Icon On The Menu Bar:



Click on the <Grid> tab.

Under the “grid tab” we can also access the grid settings properties that we have already set up from the workspace area. Just another way to reach these settings.

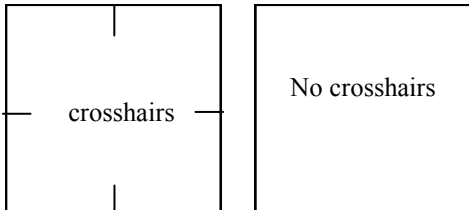


The Baste Icon On The Menu Bar:



Click on the <Auto Baste> tab.

In this window you can set the design to sew with a basting stitch. The basting stitch will sew first to hold the fabric and stabilizer together to help prevent the design and fabric from pulling and puckering as the design stitches. You can choose to add “crosshairs” to the basting stitch.



You can also set the stitch length of the basting stitch. Longer is better....easier to remove.

Set the basting stitch to sew very close to the design, but not on top of it. Be careful to not set the basting stitch too far from the edge of the design. The machine reads the basting stitch as part of the design file. You could accidentally set the basting stitch distance past the outer edge so far that the machine will require a larger hoop to stitch the design.

The Color Sort Icon On The Menu Bar:

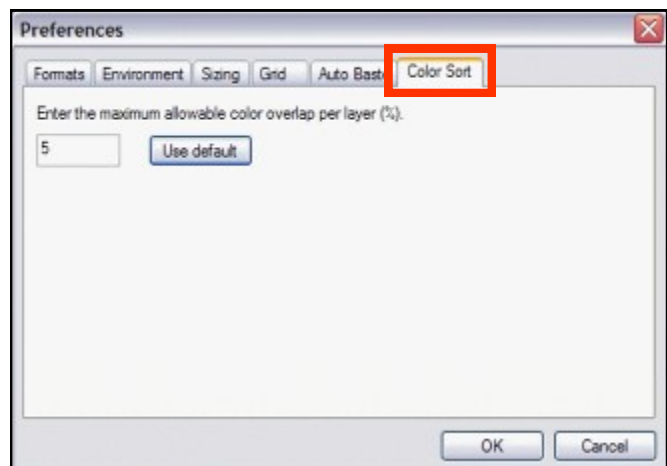
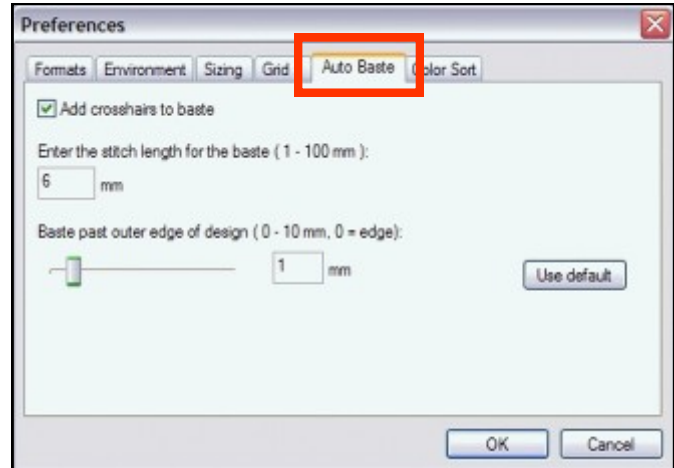


Click on the <Color Sort> tab.

When you click on the Color Sort icon on the menu bar, the software looks at the design to see if any colors are repeated. Then it decides if any of the repeated colors can be combined to reduce the color stops. If the software reduces the color stops by combining colors, it will overlap the colors to insure there are no gaps.

If the software decides that certain colors should not be combined it will leave them as they were.

The percentage of overlap with the combined colors can be adjusted here. I have found that 5% is acceptable. Some professional designers may change this setting, but most of use will do just fine with the default setting of 5%.

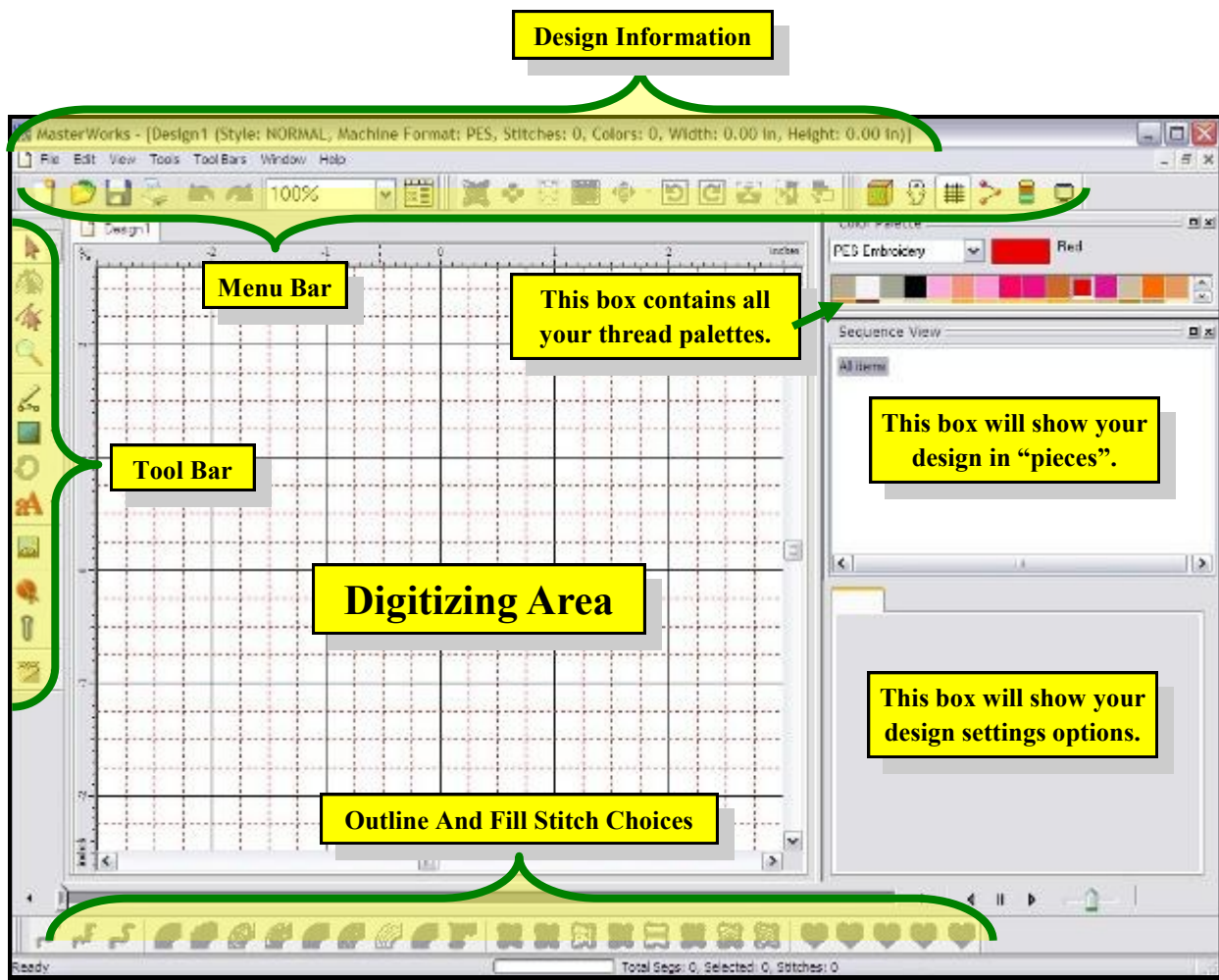


The Workspace Windows & Tools

The MasterWorks workspace contains all the tools, fills, color palette, properties settings etc. all on one screen! You do not need to continually save your design and open it in another area of your software package!

At first, the workspace may look a little overwhelming, but in just a few short lessons you will learn just how convenient everything is.

Below is a basic map of how the workspace is laid out. You will use all the icons and tools as you progress through your lessons.

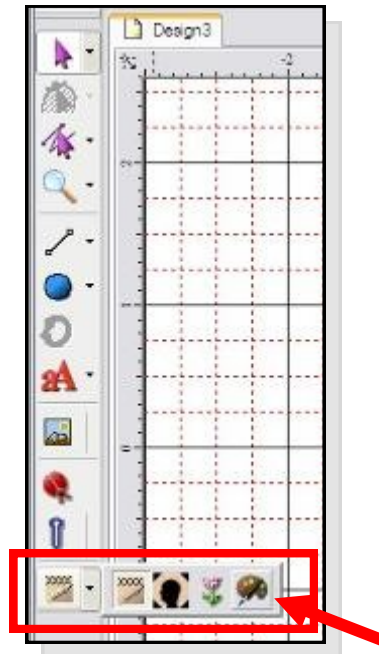


MAKING THE FIRST DESIGN

For our first design, we will make a funky chicken.

Left click on the <wizard tool>.

Left click on the <auto artwork wizard> at the end of the flyout bar.

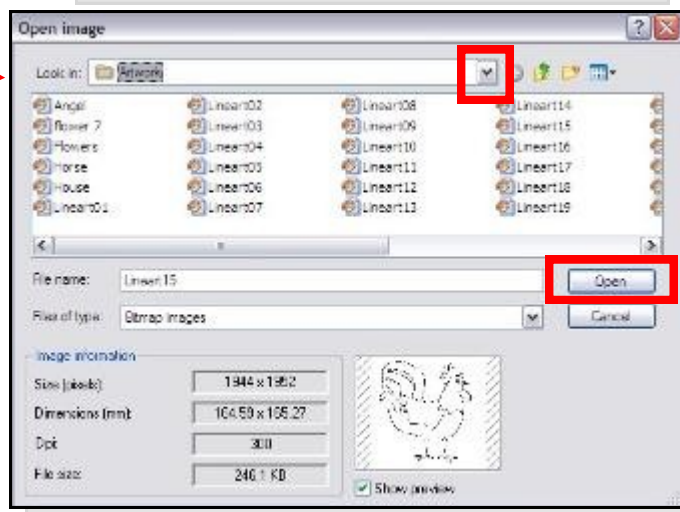


The Auto Artwork Wizard

When the “auto artwork wizard” window opens, left click on <select image> button.



The “Open Image” window will open. Left click on the down arrow at the end of the “look in:” box.



Follow the “path” to the artwork file. As you click on each choice below, a new screen will open.

- C: drive
- Designer’s Gallery
- Masterworks
- Artwork
- Lineart15